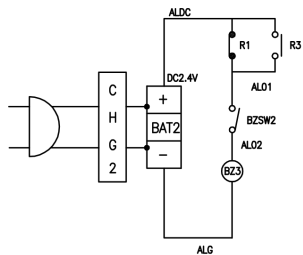
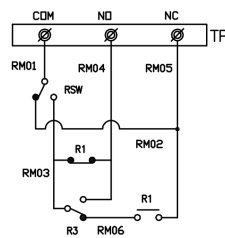


ALARM BUZZER

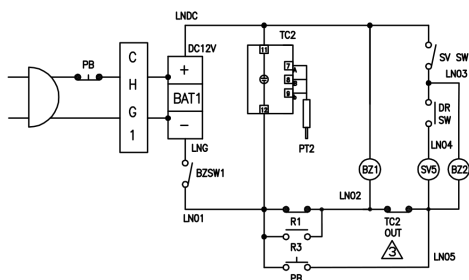


REMOTE

(Remote Switch)



If the Auto Back-up System is Installed (LN2)



SIMBOL	DESCRIPTION	REMARKS
BZ2	DC12V Buzzer	
R1,3	Support Relay	
TC2OUT	Temperature Controller Output	
DRSW	DOOR Switch	
PT2	RTD Sensor (Pt100Ω)	
TC2	Temperature Controller	
SV5	Solenoid Valve (LN2)	
SVSW	Solenoid Valve Switch	
PB	Push Button(BAT CHECK)	
BZ1	DC12V Buzzer	
BZSW1	Buzzer Switch(AL-1)	
BAT1	Battery(DC12V)	
CHG1	Battery Charger	
SIMBOL	DESCRIPTION	REMARKS
If the Auto Back-up System is Installed (LN2)		
R1,3	Support Relay	
BZ3	DC 3V Buzzer	
BZSW2	Buzzer Switch(AL-1)	
BAT2	Battery(DC 2.4V)	
CHG2	Battery Charger	
SIMBOL	DESCRIPTION	REMARKS
Alarm		
R1.3	Support Relay	
RSW	Switch Remote Control	
TP	Terminal.Output Signal	
SIMBOL	DESCRIPTION	REMARKS
Remote		
THSW1-2	Thermo Start Switch	
TR	Transformer(220V ⇒110V/50VA)	
SV1-4	Solenoid Valve	
PSW1-2	Pressure Control Switch	
RL	Error Lamp(AL2)	
T2,3	Timer	
T1	Compressor Delay Timer	
COMP1-2	Compressor(φ3 380~415V)	
TH1-2	Thermal Relay	
F1SB.F2SB	Support Fan Motor	
F1-2	Fan Motor	
CS	Power Outlet	
R1-5	Support Relay	
MG1-2	Magnet Relay	
PT1	RTD Sensor (Pt100Ω)	
TC1	Temperature Controller	
PSW	Power Switch	
SIMBOL	DESCRIPTION	REMARKS

Description: Wiring Diagram CRYO 170/230



Drawing no.:	5086084	Revision:	05
Drawing (initials):	DBL	Date:	201210
Approval (initials):	MET	Date:	201210

All rights to this drawing belong to Arctiko A/S. The drawing may not be copied nor presented to any other person without prior written consent of Arctiko A/S.