



This quickstart guide covers preparation and use for the following models:

**TRID30-7**

1. SOFTWARE SETUP

Before using your logger, you will need to download and install our freely available companion LogTag® Analyzer software from our website: <https://logtagrecorders.com/ita3/>. Simply browse to our software page, fill in your details and begin your download.

Once it has finished downloading, install LogTag® Analyzer to your computer and start the program once it is installed. (For detailed software download and install instructions, please refer to the LogTag® Analyzer User Guide).

2. LOGTAG® CONFIGURATION

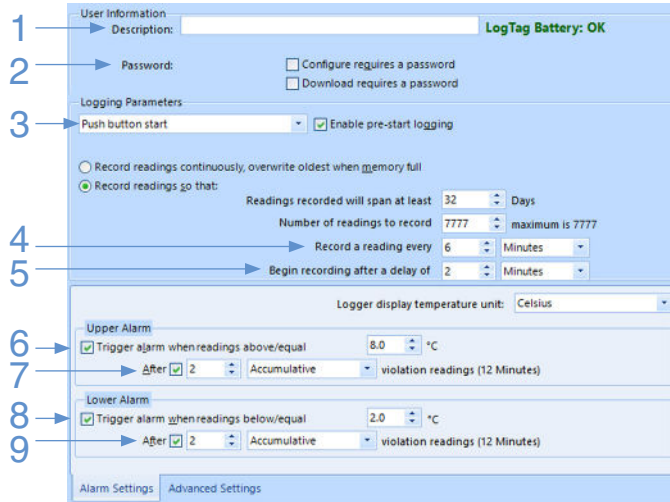
Next, you will need an Interface Cradle connected to your computer. Once connected, your computer should automatically notify you that it has successfully installed the Cradle onto your computer. Please visit <https://logtagrecorders.com/support> if you are encountering any issues.

Please note: You only require 1 Interface Cradle for all non-USB LogTag® products. You can however, connect as many Cradles as you like if you wish to configure multiple loggers simultaneously.



## Standard Configuration Options

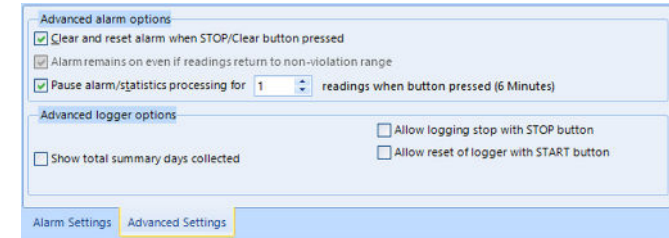
With the Software running, the easiest way to configure your LogTag® for use is with the 'LogTag Wizard' which can be accessed by pressing the 'F2' key on your keyboard or you can browse via the top navigation menu: 'LogTag' > 'Wizard'.



1. Provide a 'Description' to identify the logger being configured.
2. (Optional) specify a password for next configure or download.
3. Select Push button or Time/Date start.
4. Enter the recording interval you wish to use. The duration of the shipment and/or number of readings to record changes according to the recording interval entered.
5. (Optional) Enter a start delay before the logger begins recording.
6. Specify the **upper** temperature alarm threshold.
7. (Optional) Require the **upper** alarm to trigger after a number of consecutive or accumulative readings instead of an instant alarm.
8. Specify the **lower** temperature alarm threshold.
9. (Optional) Require the **lower** alarm to trigger after a number of consecutive or accumulative readings instead of an instant alarm.

## Advanced Configuration Options

Click **Advanced Settings** to view and change the loggers advanced features including the 'Pause' function, stopping and re-activation, clearing and preserving alarms, power save and temperature units displayed (°C or °F).



3. START / INSPECT

## STARTING THE LOGGER

Depending on your selection during configuration, the logger may start recording by itself, or require a manual start.

### Date/Time start

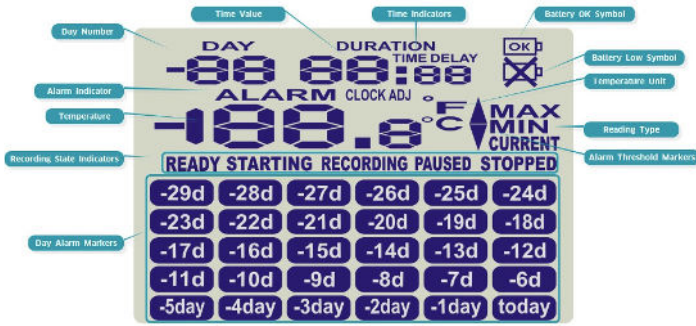
If you configured the logger for a Date/Time start, simply wait until this time has passed. The logger will start recording automatically. The display shows *dE St rE*.

### Push-Button Start

To start the logger, press and hold the Start/Clear/Stop button until **Starting** stops flashing, then release.

- We recommend enabling pre-start logging, so data is not lost if the user forgets to press the button. Temperatures will be recorded even before the trip is started.
- A start delay can be useful, if you need the logger or probe to acclimatize before the recording of data begins. The logger will display the time remaining until it starts recording.
- After the logger started logging, pressing the button will insert an inspection mark in the data recordings, which is displayed when viewing the data in the software.
- During recording, the display shows the temperature of the last reading taken, the current time, battery status and a combination of alarm status and history. A reading is taken and the display updated every logging interval as configured in LogTag® Analyzer.
- If configured, Alert Conditions can be reset when the Start/Clear/Stop button is pressed.

## 4. DISPLAY OVERVIEW



### DAY ALARM MARKERS

This grid shows 5 rows of 6 markers, named **today** to **-29d**, which are switched on when an alarm event occurred that day.

### RECORDING STATE INDICATORS

The recording state indicators show if the logger is currently recording data.

- If the **READY** symbol is shown, the logger is ready to be started. Depending on the configuration it may already record pre-start readings.
- If the **STARTING** symbol is shown, the logger has been configured with a start delay. The word **DELAY** is also shown, together with the time in hours and minutes until the start.
- If the **RECORDING** symbol is shown, the logger is recording temperatures at the sample interval defined during configuration with LogTag® Analyzer.
- If **RECORDING** is shown together with the word **PAUSED**, the product is also recording, but the recorded values are not taken into account when calculating alarm events and durations.
- If the word **STOPPED** is shown, the logger has finished recording temperature data.

### TEMPERATURE

This 4 character, 7-segment display shows the last recorded temperature whilst the logger is recording. Once the logger has stopped, nothing will be displayed.

### ALARM INDICATOR

The **ALARM** symbol is shown as soon as the logger has registered an alarm event. If no alarms have been registered, or if an existing alarm has been cleared, the alarm symbol is not shown.

### DAY NUMBER

During Review, this shows the day number of the currently displayed day statistic. Today is **00 DAY**, days in the past are represented between yesterday - **1 DAY** and - **29 DAY**.

During configuration of the logger in LogTag® Analyzer you can also enable this to show the total number of days on which data were collected while recording.

## TIME VALUE AND TIME INDICATORS

The time value display is used to show one of the following:

- a clock with the current time,
- time remaining to start of logging with a delayed start or
- duration, for example of an alarm.

The time indicators identify, which of those is displayed:

- If the word **TIME** is shown, the time value represents the current time in hours and minutes (24-hour format).
- If the word **DELAY** is shown, the time value represents a start delay in hours and minutes.
- If the word **DURATION** is shown, the time value represents the length of time in hours and minutes an alarm threshold was exceeded, for example the time above the upper alarm threshold.

The word **5t rt** appears in place of a time value if the logger is configured for a date/time start, and the start time has not yet passed.

### BATTERY OK/LOW CONDITION

An automatic battery test is performed hourly. The battery low symbol will appear if the logger's battery is low. If the battery OK symbol is shown, the battery is still OK.

### TEMPERATURE UNITS

Depending on the selected display temperature units during configuration, this shows either °F or °C.

### READING TYPE

The word **CURRENT** is shown when the temperature on the display represents the last recorded temperature.

The word **MAX** is shown in Review mode, when the temperature on the display represents the maximum recorded temperature for the day displayed.

The word **MIN** is shown in Review mode, when the temperature on the display represents the minimum recorded temperature for the day displayed.

### ALARM THRESHOLD MARKERS

The up-arrow is shown when the temperature displayed (i.e. last recorded) is above the specified upper temperature threshold.

The down-arrow is shown when the temperature displayed is below the specified lower temperature threshold.



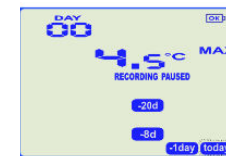
## 5. REVIEW/DOWNLOAD/ANALYZE

### REVIEWING THE RESULTS ON THE LOGGER

The logger will display up to 30 days of max/min/duration and alarm statistics.

To review the day statistics press the Review button. Each press of the button will step through the Max and Min temperatures for each day starting with today and moving backwards through the days (displayed day will flash).

Following are some examples.



Pressing the Review button displays the current day's MAX statistic. The **today** segment flashes and DAY 00 is shown to indicate the 'Today' selection.



Pressing the Review button again displays the day's MIN statistic.



Pressing the Review button again displays the previous day's MAX statistic **-1 day**. The MAX statistic in this example is above the upper limit and the ALARM was triggered for a duration of 10 hours and 11 minutes.



Pressing the Review button again displays that day's MIN statistic.

### DOWNLOADING WITH LOGTAG ANALYZER

1. Open LogTag® Analyzer on the computer you wish to download the logger on.
2. Ensure an Interface Cradle is connected and insert the LogTag® into the Cradle.
3. If you have enabled automatic download in Edit > Options > Automation then LogTag® Analyzer will automatically download the readings from the Logger and display a temperature chart. To manually download the readings, Select "LogTag" > "Download" or alternatively press "F4" on your keyboard and follow on-screen instructions.